



my.
kitchen
starts
with you

createmykitchen.co.uk



A man and a woman are cooking in a bright, modern kitchen. The man, with a beard and long hair, is wearing a dark blue long-sleeved shirt and is focused on chopping red bell peppers on a black cutting board. The woman, with long blonde hair, is wearing a light grey short-sleeved shirt and is stirring a large red pot on the stove with a wooden spoon. The kitchen features white subway tile backsplash, white cabinetry, and open wooden shelves holding various kitchen items like red pots, white bowls, and a small potted plant. A window in the background lets in natural light. The text "my. kitchen" is overlaid in the center in a white, sans-serif font.

my. kitchen

contents

04 **albany**
solid timber door painted (stock)

09 **aura**
vinyl wrapped door

14 **avondale**
traditional wrapped door

16 **balmoral**
shaker vinyl wrapped door

21 **boston**
shaker vinyl wrapped door

26 **buckingham**
five-piece shaker pvc door

31 **gemini**
handle-less vinyl wrapped door

33 **gresham**
shaker vinyl wrapped door

35 **hadfield**
solid timber door

37 **larissa**
handle-less lacquered door

42 **lumi**
vinyl wrapped door

44 **malham**
solid timber door

46 **odyssey**
laser edged acrylic door

49 **orion**
handle-less vinyl wrapped door

52 **rivington**
narrow framed shaker door

57 **vogue**
vinyl wrapped door

2023 brochure



63 ————— colours

66 ————— mtm doors

68 ————— handles

86 ————— lighting

88 ————— gola system

92 ————— storage

96 ————— accessories

98 — vertex drawer boxes

100 ————— basics range

All of our Kitchens can be ordered in all the colours found on our Colours page 84. *Some limitations in gloss.

The colours reproduced within this brochure are as close as the reproduction process allow. Due to our policy of continuous product development, we reserve the right to alter any specifications without prior notice. Products can be introduced and discontinued at any time, it is recommended to check availability from supplier before ordering.

albany



my. albany range

The narrow solid ash shaker frame in **albany** oozes both style and substance. Available from stock in 4 on trend colours or create your own unique kitchen with a choice of another 15 paint to order colours.

designer's tip:

Use the multi-purpose rail to create that in-frame look.

available from stock in (painted):





albany



dove grey

albany



albany



navy blue

albany

aura



my. aura range

A simple slab door finished in a tactile super matt finish sets up **aura** as a firm favourite for lovers of modern design. Available in a range of super matt colours which are strong enough to work on their own or as a contrasting design for true individuality.

designer's tip:

Accessorise with classic or rustic fittings and strongly grained timber worktops for a perfect contrast.

available in (super matt):

white	mussel	dove grey	navy blue	graphite
-------	--------	-----------	-----------	----------



dove grey (super matt)

aura



dusty pink & graphite (super matt)

aura (made to order)



mussel (super matt)

aura



navy blue & Indigo (super matt)

aura

avondale



my. avondale range

A classic tongue and groove style mid panel affords Avondale a classic cottage style featured in an ever popular ivory finish. Adding curved doors further enhances the charm of this kitchen design.

designer's tip:

Add oak block worktops and matching tongue and groove end panels to complete the traditional appearance.

available in (matt):



ivory

ivory (matt)



avondale

balmoral



made to order

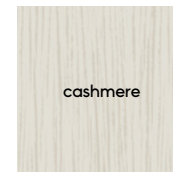
my. balmoral range

A timeless classic shaker with 65mm rails and stiles. A minimalist shaker that would suit anything from a quaint cottage to a luxury penthouse, with full made to order flexibility.

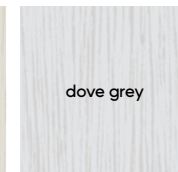
designer's tip:

Use doors as end panels to make a seamless island unit..

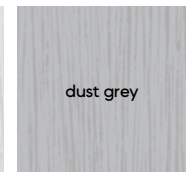
available in (ash):



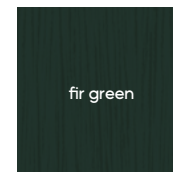
cashmere



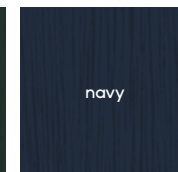
dove grey



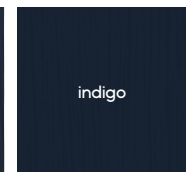
dust grey



fir green



navy



indigo



balmoral



dove grey & dust grey (ash)

balmoral



balmoral



indigo (ash)

balmoral

boston



my. boston range

boston is an update on a classic shaker design, with a wider frame and no 'V' groove. The effortless styling perfectly suits the range of five tactile, super matt finishes. Select a single colour or mix two for a truly individual kitchen.

designer's tip:

Radius end rails are a great addition to the subtle styling of the **boston** range.

available in (super matt):

white	mussel	cashmere	dove grey
fjord	dust grey	navy blue	graphite

cahsmere & white (super matt)

boston



white (super matt)

boston

fjord & white (super matt)

boston



navy blue & dust grey (super matt)

boston

my. buckingham



my. buckingham range

The **buckingham** design, featuring a wide frame and 'V' grooved joints, blends a traditional shaker design with modern colours featuring a distinctive ash effect woodgrain. The result is a timeless kitchen suited equally well to either traditional or contemporary surroundings.

designer's tip:

Add radius rails for a sleek modern finish.

available in (ash embossed & woodgrain):



ivory (ash embossed)



buckingham



lissa oak (woodgrain)

buckingham

fir green (ash embossed)

buckingham



graphite (ash embossed)

buckingham

geminini



my. gemini range

Italian inspired design meets flexibility, the **geminini** range is equally at home sporting a contemporary gloss finish or a subtle pastel tone. The integrated handle adds to the sophisticated clean appearance. Create unique kitchens and signature looks by mixing complementary made to order finishes.

designer's tip:

Curved feature doors create a softer look when used on the end of cabinet runs.

available in (gloss):



white (gloss)



gemini

gresham



my. gresham range

Stylish & chic, **gresham** is classic in both form and function. A stunning shaker-style door provides elegance in any sized kitchen. A timeless design perfectly matched with a range of feature accessories.

designer's tip:

Experiment with feature accessories like curved doors , T & G end panels & maybe an overmantle to create your own style statement.

available in (matt)

ivory

ivory (matt)



gresham

hadfield



my. hadfield range

A narrow-framed timber shaker with a beading, **hadfield** is a stunning example of a traditional door with a modern painted twist. Create your dream kitchen by using one or more of the 19 stunning painted colours on offer.

designer's tip:

Use of an overmantle, gives a more traditional feel to this classic painted kitchen.

painted to order palette:

white	soft white	ivory	porcelain	cashmere
soft cloud	dove grey	warm hearth	mussel	duck egg blue
fjord	sage	dust grey	raindrop	navy blue
midnight	graphite	studio green	noir blue	



hadfield

larissa



my. larissa range

larissa offers sleek, stunning lines for a truly modern look. With an integrated handle design and finished in either a high quality lacquered gloss, available in 5 colours, or 3 contemporary matt finishes - **larissa** is set to become a fashionable classic.

designer's tip:

Use wide, deep pan drawers with internal and external corner posts to continue the handle line around corners.

available in (gloss):

white	alabaster
dove grey	cashmere
dust grey	indigo

available in (matt):

white	dove grey
dust grey	indigo



larissa



cashmere (gloss)

larissa

dust grey (matt)



larissa



white (matt)

larissa

lumi



my. lumi range

A modern slab door available in our timeless white gloss finish from stock, and a further 6 finishes made to order, design flexibility is truly available with **lumi**. Looking to create a striking gloss kitchen, look no further than **lumi**.

designer's tip:

Experiment with contrasting gloss woodgrain feature end panels, or drawer fronts, within the kitchen.

available in (gloss):



white (gloss)



lumi



my. malham range

A classic solid timber shaker design offering a blend of traditional materials merged with modern finishes. Choose from stock natural oak or painted ivory with its subtle grain or go a stage further and select from a range of 18 carefully selected paint colours to create a stunning kitchen.

designer's tip:

Add curved doors and light coloured stone worktops to create the wow factor.

stock:



painted to order palette:

white	soft white	porcelain	cashmere	soft cloud
dove grey	warm hearth	mussel	duck egg blue	fjord
sage	dust grey	raindrop	navy blue	midnight
graphite	studio green	noir blue		



malham

odyssey



made to order

my. odyssey range

odyssey shouts contemporary, a cutting edge, flat slab door available in a range of top quality high gloss, super matt, metallic & MFC abstract finishes. Combine these options with the market leading laser edge banding to create a real impression. Use curved doors for a softer, rounded look, or clad with contrasting end panels for a striking, modern kitchen.

designer's tip:

Mix with stone or timber worktops and slim bar handles for a clean, fashionable look.

high gloss:

white	cream
dove grey	stone grey
champagne metallic	blue metallic
anthracite metallic	

super matt:

white
cashmere
dove grey
fjord
kombu green
dust grey
graphite

MFC:

osiris silver
osiris copper
osiris graphite

High gloss doors available with matching or two tone edge.
Super matt and MFC doors only available with matching edge.

white (gloss)



odyssey



dove grey (gloss)

odyssey

orion



made to order

my. orion range

orion, with its integrated handle design, available made to order. Truly is a universal design and lends itself, not just as a great kitchen option, but also a superb solution to home living & home office creations.

designer's tip:

Utilise the full range colour palette to mix and match for a contrasting finish.

orion navy blue (super matt) & lumi white (gloss)

orion





orion porcelain and reed green (super matt)

orion

rivington



my. rivington range

The narrow-framed shaker **rivington** design in sleek super matt paint effect finishes. Traditional design in the latest colour trends are perfect at home in the trendiest loft, or in a cosy cottage.

designer's tip:

Excellent colour palette well suited to mix and match for contrast.

available in (super matt):

white	cashmere	dove grey
stone grey	dust grey	graphite

cashmere (super matt)



rivington



dove grey (super matt)

rivington

graphite & dove grey (super matt)



rivington



stone grey (super matt)

rivington

vogue



my. vogue range

A contemporary, lacquered high gloss minimalist slab door. Effortlessly modern and offering an understated elegance, **vogue** suits modern kitchen layouts and works equally well in small or large settings. Available in six colours including ever popular dove grey.

designer's tip:

vogue is perfect for the smaller kitchen as the gloss finish bounces light around the room.

available in (gloss):

white	alabaster	dove grey
cashmere	dust grey	indigo

white (gloss)



vogue



alabaster (gloss)

vogue

dove grey (gloss)



vogue



cashmere (gloss)

vogue



my.

colour options

All stock vinyl and made to order doors are available in the vinyls below, with some limitations in gloss.



matt	super matt	woodgrain	ash embossed	gloss
white	white	maple canadian	white	white
ivory	mussel	beech	ivory	dove grey
vanilla	cashmere	pippy oak	cashmere	mussel
concrete (light)	dove grey	lissa oak	dove grey	cashmere
dakar	fjord	sonoma oak	dakar	cream
concrete (dark)	dusty pink	walnut	mussel	dust grey
	graphite		dust grey	grey
	indigo		stone grey	black
			navy blue	
			indigo	

All colours are as close as the reproduction process allows.

**odyssey
gloss**

white
cream
dove grey
stone grey
champagne metallic
blue metallic
anthracite metallic

**odyssey
super matt**

white	kombu green
cashmere	dust grey
dove grey	graphite
fjord	indigo

**odyssey
mfc**

osiris silver
osiris copper
osiris graphite

albany, hadfield & malham
painted to order palette

white	dove grey	dust grey	noir blue
soft white	warm hearth	raindrop	
ivory	mussel	navy blue	
porcelain	duck egg blue	midnight	
cashmere	fjord	graphite	
soft cloud	sage	studio green	

odyssey gloss doors available with matching or two tone edge.
odyssey super matt and mfc only available with matching edge.

A woman with dark hair and bangs, wearing a dark blue floral patterned shirt, is pouring coffee from a silver gooseneck kettle into a white mug. She is looking down at the kettle. In the foreground, a man with dark hair, wearing a white t-shirt, is seen from the back, holding the white mug. They are in a kitchen with a large window in the background showing green foliage. On the counter, there is a glass jar with coffee grounds and a metal lid. The word "my." is overlaid in the center of the image.

my.



MTM door options



MTM door options key:

- A** angled doors available
- B** bedroom doors available
- C** curved doors available
- G** gloss doors available
- S** only available in super matt



aries

A B G



ascot

B G



auckland

B



aura

A B C S



avondale

B C



berkeley

A B C



boston

B C



bowland

A B C



bury

A B G



countryvale

A B G



dover

A B G



euroline

A B G



gemini

C G



gisburn

A B G



gresham

A B C



hampshire

A B G



hapton

A B G



hebden

A B G



kent

B



lumi

A B C S



mayfair

B C



milan

A B C



odyssey*

B C G



orion

B G



oxford

A B C



richmond

B G



salisbury

A B



sherwood

B G



westport

A B G



NO.01



Oval tube 'D' handle, aluminium centre with die-cast legs, 160mm Bar Handle, Brushed Nickel

NO.03



156mm 'T' Bar Handle, Brushed Nickel

NO.04



Shaker 'D' handle, 96mm Satin Nickel

NO.09



Shaker 'D' handle, 96mm Antique English

NO.11



30mm Windsor Knob & Plate Chrome

NO.12



40mm Windsor Knob Chrome

NO.13



160mm Windsor Handle Chrome

NO.14



96mm Windsor Handle Chrome

NO.15



128mm Windsor Latch Handle Chrome

NO.16



30mm Westminster Knob Chrome

NO.17



64mm Windsor Shell Handle Chrome

NO.18



96mm Windsor Shell Handle Chrome

NO.21



Reeded drop handle, 160mm Pewter

NO.22



Reeded 'T' knob handle, 70mm Pewter

NO.23



Archer bow handle, 128mm Shiny Chrome

NO.24



Roundel 'D' handle, 128mm Satin Chrome

NO.26



Dimple tapered bow handle, 128mm Satin Chrome

NO.27



Parallel bowed rod handle, 192mm Brushed Nickel

NO.28



Parallel bowed rod handle, 320mm Brushed Nickel

NO.29



'T' bar handle, 387mm Brushed Nickel

NO.31



Oval tube 'D' handle, aluminium centre with diecast legs, 320mm Brushed Nickel

NO.32



Oval tube 'D' handle, aluminium centre with diecast legs, 512mm Brushed Nickel

NO.33



Angled boss bar handle, 195mm Brushed Nickel

NO.34



Angled boss bar handle, 392mm Brushed Nickel

NO.35



Angled boss bar handle, 635mm Brushed Nickel

NO.36



Dimpled knob handle, 33mm Brushed Nickel

NO.37



Dimpled bow handle, 128mm Brushed Nickel

NO.38



Taper strap handle, 96mm Satin Nickel

NO.39



Hammered 'D' handle, 128mm Pewter

NO.45



Valentino 'D' handle, 96mm Pewter

NO.46



Valentino Latch handle, 96mm Pewter

NO.47



Titan 'D' handle & back plate, 64mm Pewter

NO.48



Titan Latch handle & back plate, 64mm Pewter

NO.49



Hammered knob, 32mm Pewter

NO.51



Knob handle, 32mm Satin Nickel

NO.60



Keyhole bar handle, 128mm Brushed Nickel

NO.61



Keyhole bar handle, 156mm Brushed Nickel

NO.62



Keyhole bar handle, 256mm Brushed Nickel

NO.63



Keyhole bar handle, 306mm Brushed Nickel

NO.64



Keyhole bar handle, 356mm Brushed Nickel

NO.65



Keyhole bar handle, 456mm Brushed Nickel

NO.66



Keyhole bar handle, 632mm Brushed Nickel

NO.67



Keyhole bar handle, 756mm Brushed Nickel

NO.80



Aries bar handle, 160mm Brushed Nickel

NO.81



Aries bar handle, 214mm Brushed Nickel

NO.82



Aries bar handle, 310mm Brushed Nickel

NO.83



Aries bar handle, 374mm Brushed Nickel

NO.84



Aries bar handle, 474mm Brushed Nickel

NO.85



Aries bar handle, 502mm Brushed Nickel

NO.90



Flat curve rod handle, 96mm Chrome

NO.91



Flat curve rod handle, 146mm Chrome

NO.92



Flat curve rod handle, 196mm Chrome

NO.93



Flat curve rod handle, 246mm Chrome

NO.94



Flat curve rod handle, 296mm Chrome

NO.99



Hampshire 128mm Letter Box Handle

NO.100



'T' bar handle, 96mm Hollow Brushed Nickel

NO.101



'T' bar handle, 128mm Hollow Brushed Nickel

NO.102



'T' bar handle, 160mm Hollow Brushed Nickel

NO.103



'T' bar handle, 177mm Hollow Brushed Nickel

NO.104



'T' bar handle, 256mm Hollow Brushed Nickel

NO.105



'T' bar handle, 357mm Hollow Brushed Nickel

NO.110



320mm Euston Strap Handle, Brushed Nickel

NO.111



160mm Euston Strap Handle, Brushed Nickel

NO.112



320mm Euston Strap Handle, Chrome

NO.113



160mm Euston Strap Handle, Chrome

NO.114



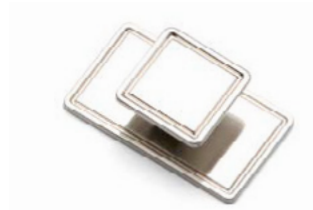
320mm Euston Strap Handle, Pewter

NO.115



160mm Euston Strap Handle, Pewter

NO.120



30mm Windsor Knob & Plate, Brushed Nickel

NO.121



40mm Windsor Knob, Brushed Nickel

NO.122



64mm Windsor Shell Handle, Brushed Nickel

NO.123



96mm Windsor Shell Handle, Brushed Nickel

NO.124



160mm Windsor Handle, Brushed Nickel

NO.125



96mm Windsor Handle, Brushed Nickel

NO.126



128mm Windsor Handle, Brushed Nickel

NO.130



40mm Windsor Knob, Pewter

NO.131



64mm Windsor Shell Handle, Pewter

NO.132



96mm Windsor Shell Handle, Pewter

NO.133



96mm Camden Shell Handle, Brushed Nickel

NO.134



320mm Camden Handle, Brushed Nickel

NO.135



160mm Camden Handle, Brushed Nickel

NO.136



96mm Camden Shell Handle, Chrome

NO.137



320mm Camden Handle, Chrome

NO.138



160mm Camden Handle, Chrome

NO.139



96mm Camden Shell Handle, Pewter

NO.140



320mm Camden Handle, Pewter

NO.141



160mm Camden Handle, Pewter

NO.142



Camden Rectangular Knob, Antique Black

NO.143



96mm Camden Shell Handle, Antique Black

NO.144



160mm Camden Handle, Antique Black

NO.145



320mm Camden Handle, Antique Black

NO.150



320mm Soho Strap Handle, Brushed Nickel

NO.151



160mm Soho Strap Handle, Brushed Nickel

NO.152



320mm Soho Strap Handle, Chrome

NO.153



160mm Soho Strap Handle, Chrome

NO.154



320mm Soho Strap Handle, Pewter

NO.155



160mm Soho Strap Handle, Pewter

NO.160



35mm Beehive Knob, Brushed Nickel

NO.161



35mm Beehive Knob, Chrome

NO.165



40mm Windsor Knob, Antique Copper

NO.166



160mm Camden Handle, Antique Copper

NO.167



320mm Camden Handle, Antique Copper

NO.168



96mm Camden Shell Handle, Antique Copper

NO.170



59mm Camden Rectangular Knob, Antique Copper

NO.171



59mm Camden Rectangular Knob, Brushed Nickel

NO.172



59mm Camden Rectangular Knob, Chrome

NO.173



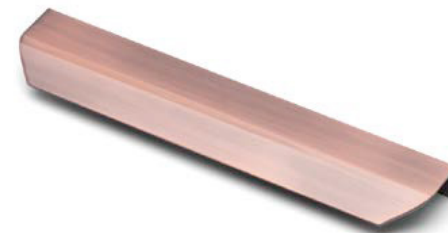
59mm Camden Rectangular Knob, Pewter

NO.180



65mm Crofton Trim Handle, Antique Copper

NO.181



200mm Crofton Trim Handle, Copper Antique

NO.182



65mm Crofton Trim Handle, Black

NO.183



200mm Crofton Trim Handle, Black

NO.184



65mm Crofton Trim Handle, Brushed Nickel

NO.185



200mm Crofton Trim Handle, Brushed Nickel

NO.186



65mm Crofton Trim Handle, Satin Chrome

NO.187



200mm Crofton Trim Handle, Satin Chrome

NO.190



160mm Lany Knurled Handle, Copper & Chrome

NO.191



160mm Lany Knurled Handle, Black & Chrome

NO.192



160mm Lany Knurled Handle, Pewter & Chrome

NO.200



30mm Fender Knob, Black Smoked

NO.201



160mm Fender Handle, Black Smoked

NO.202



30mm Fender Knob, Chrome

NO.203



160mm Fender Handle, Chrome

NO.204



30mm Fender Knob, Satin Brass

NO.205



160mm Fender Handle, Satin Brass

NO.210



160mm Brixton Handle, Antique Copper

NO.211



160mm Brixton Handle, Brushed Satin Nickel

NO.212



160mm Brixton Handle, Chrome

NO.213



160mm Brixton Handle, Pewter

NO.214



160mm Brixton Handle, Satin Brass

NO.220



128mm Crackle Handle, Chrome/White

NO.221



Crackle 'T' Knob, Chrome/White

NO.222



35mm Crackle Knob, Chrome/White

NO.230



40mm Camden Oval Knob, Chrome

NO.231



40mm Camden Oval Knob, Brushed Nickel

NO.232



40mm Camden Oval Knob, Pewter

NO.233



40mm Camden Oval Knob, Antique Copper

NO.240



160mm Lambeth Handle, Antique Black

NO.241



160mm Lambeth Handle, Pewter

NO.242



320mm Lambeth Handle, Antique Black

NO.243



320mm Lambeth Handle, Pewter

NO.250



160mm Brent Handle, Chrome

NO.251



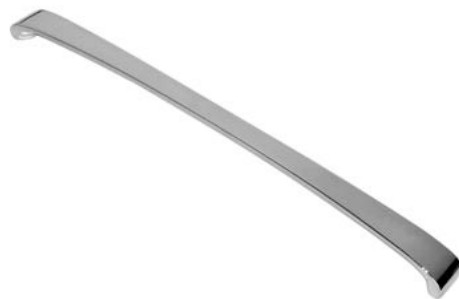
160mm Brent Handle, Brushed Nickel

NO.252



160mm Brent Handle, Pewter

NO.253



320mm Brent Handle, Chrome

NO.254



320mm Brent Handle, Brushed Nickel

NO.255



320mm Brent Handle, Pewter

NO.260



160mm Bexley Handle, Chrome

NO.261



160mm Bexley Handle, Brushed Nickel

NO.262



160mm Bexley Handle, Pewter

NO.263



320mm Bexley Handle, Chrome

NO.264



320mm Bexley Handle, Brushed Nickel

NO.265



320mm Bexley Handle, Pewter

lighting options



NO.30



Starbright Square LED Square Light

NO.31



Starbright Square LED x3 Light Kit
(Includes Power Module for up to 6)

NO.33



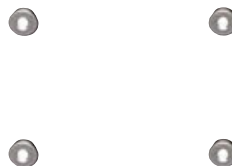
Quattro Recessed LED Light

NO.37



Plinth Light 15mm Round Light

NO.38



Plinth Light 15mm Round x4 Light Kit
(Includes Power Module for up to 10)

NO.40



Rimini Recessed /Surface Mounted LED Light
Available in Nickel or Chrome (shown)

NO.42



Como High Output LED Cabinet Light in Nickel

NO.44



Power Tech Module Stainless Steel Effect
102mm Diameter, x3 240v & x2 USB 500ma Sockets

NO.45-60



Corsica LED Strip Lights. Available in various lengths,
Corner Fit, 'Y'-Splitters and Door Sensors

gola system

my.

my. gola system

The **gola** system can be used to produce a stylish contemporary finish, with no need for filler panels and with NO restrictions on panel or door widths (the only restrictions are the heights of Base units), giving a much sleeker look and a more modern appearance - making it perfectly suited to our extensive made to order ranges.

Our **vogue** stock range has been specifically developed with specific **gola** sizes in mind for a 'no-fuss straight off the shelf' solution.

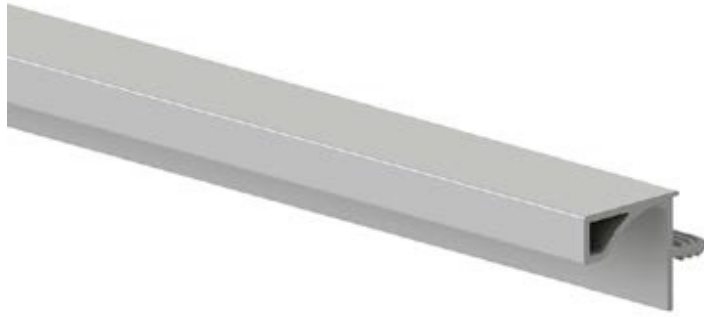
Available from stock in:

matt anodised

anthracite



my.



wall profile



upper profile

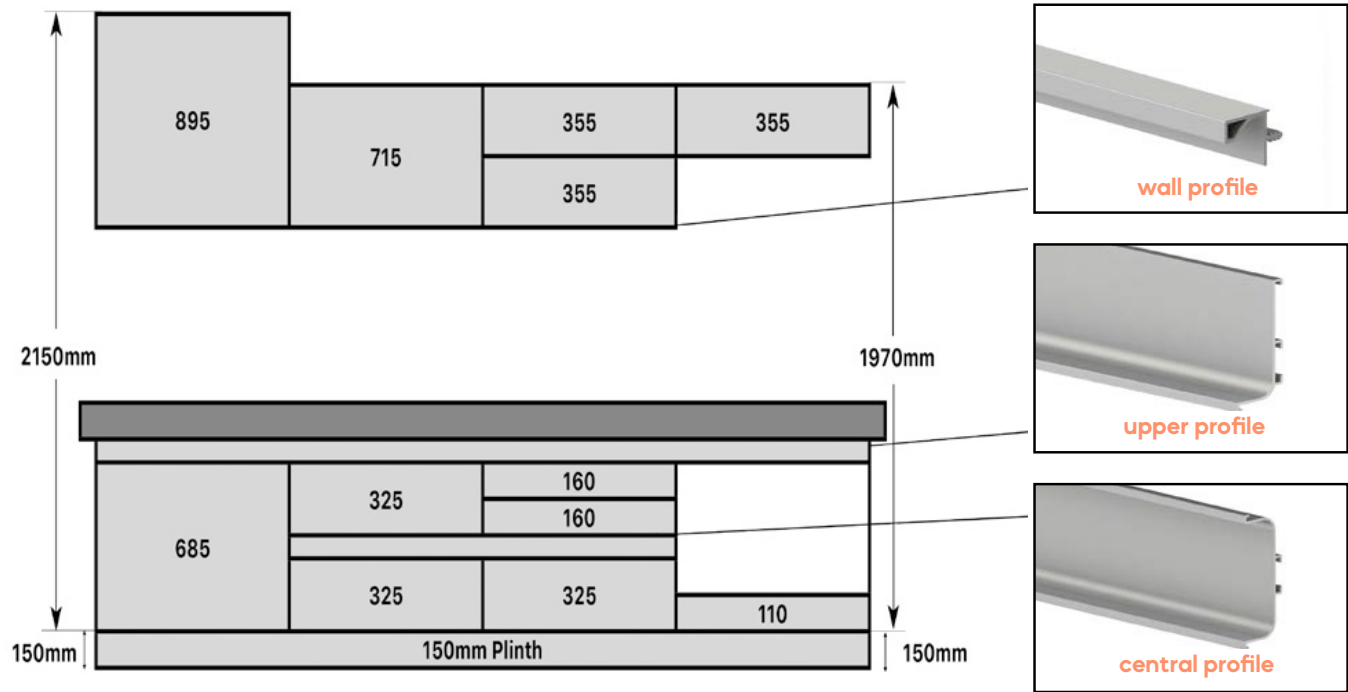


central profile

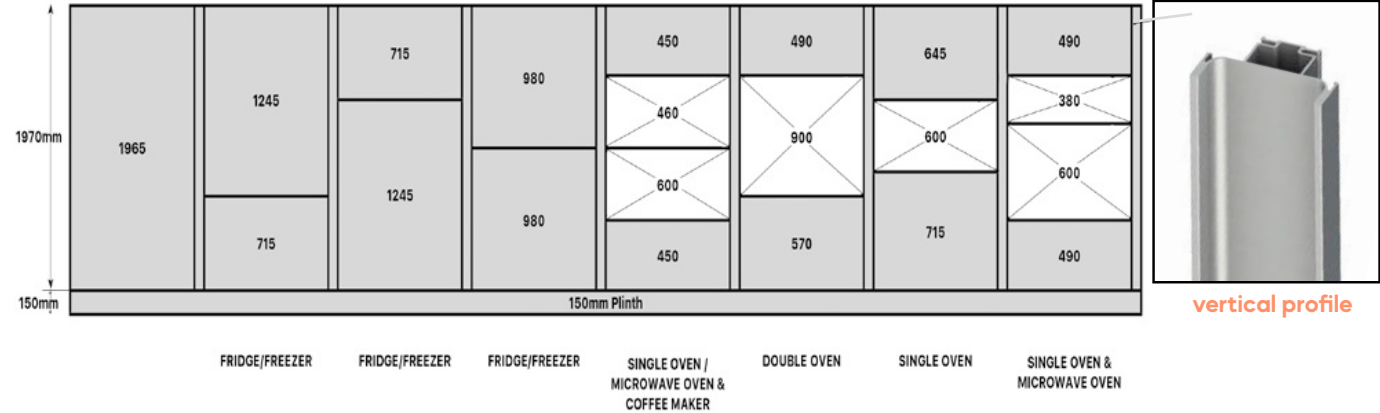


vertical profile

base units & wall doors



larger doors & appliance fitting (compatible with integrated appliances)



All colours are as close as the reproduction process allows.



storage options



150mm Pull Out Unit



300mm Base Pull Out - Left & Right Versions available, 400mm also available



Individual Pull Out Chrome Wire Baskets - Available in 300, 400, 500, 600, 800, 900 & 1000mm



3/4 Corner Carousel to suit 900mm 'L' Shaped Corner Base Unit



Ultimate Carousel to suit 900mm 'L' Shaped Corner Base Unit



1/2 Corner Carousel - Available in 900 (450mm Door) & 1000 (500/600mm Door)



Pull Out Corner Shelf to suit 1000mm Base Unit - Available in Left or Right Corner Unit



Universal Corner Optimiser - Available in Left or Right Corner Unit, to suit Bases 800, 900, 1000



Corner Optimiser - Available in 900mm & 1000mm
Available in Left or Right Corner Unit



2 Section short Wastebin 450mm



3 Section Wide Tall Wastebin 600mm



Single Section Wastebin 15L



3 Section Narrow Wastebin 400mm



3 Section Narrow Wastebin 300mm



3 Section Wastebin - Available in 500mm (45L) & 600mm (56L)



2 Section Wastebin - Available in 500mm (45L) & 600mm (56L)



Supra Pull Out Module - Universal Left or Right Soft Close Designed specifically to utilise unit space



accessory options

NO.01



Soft Close Drawer Box Kit 1270mm

NO.02



Soft Close Drawer Box Kit 2450mm

NO.04



Vantage Gallery Rails (Pair) *two Pairs required For Double

NO.05



Vantage Gallery Rail Bracket (Pair) Single Height 141mm

NO.05a



Vantage Gallery Rail Bracket (Pair) Double Height 204mm

NO.06



Soft Close 90 Degree Hinge

NO.06a



Soft Close 45 Degree Hinge

NO.06b



Soft Close 90 Degree Blind Corner Hinge

NO.07



Soft Close 155 Degree Hinge

NO.08



Backplate 1 Cam Adjust Screw Fix

NO.08a



Backplate 2 Cam Adjust Euro Screw

NO.08b



Backplate 3 Clip Screw Fix

NO.08c



Backplate 4 Clip Euro Screw

NO.09 & 10



8kg & 11kg Gas Stay Kit

NO.11 & 12



NSDX Lift and Stay (Left & Right)

NO.13



NSDX Catch

NO.15 & NO. 14



Plasline Two Flexible Angle Plinth 150mm x 4M



vertex drawer boxes



FITTINGS001VA



83mm Soft Close Drawer Kit - 450mm Deep

FITTINGS002VA



93mm Soft Close Drawer Kit - 450mm Deep

FITTINGS005VA



83mm Internal Drawer Front Fixing

FITTINGS006VA



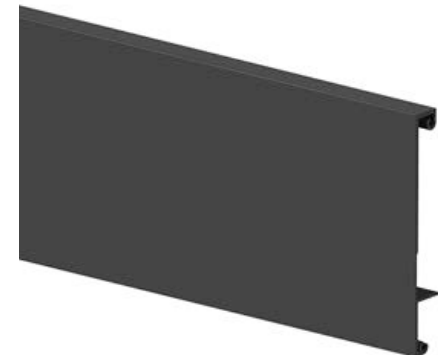
93mm Internal Drawer Front Fixing

FITTINGS009VA



Gallery Rails inc. Fixings

FITTINGS010VA



Internal Drawer Panel 93.5 x 1100mm
(178mm requires Front Railing)

FITTINGS0003VA



131mm Soft Close Drawer Kit - 450mm Deep

FITTINGS004VA



178mm Soft Close Drawer Kit - 450mm Deep

FITTINGS007VA



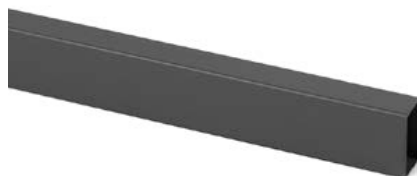
131mm Internal Drawer Front Fixing

FITTINGS008VA



178mm Internal Drawer Front Fixing

FITTINGS011VA



Internal Drawer Front Railing 1120mm
(Required for 178mm)

FITTINGS030VA - 037VA

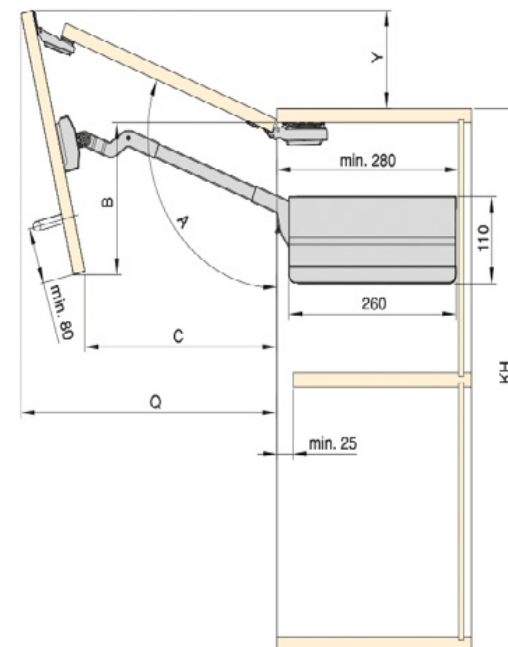


Base & Back 300mm to 1000mm wide (450mm Deep)
Back Supplied @ 355mm for Assembly on site.

AGILE40VA & AGILE41VA



AGILE Flap Kit - For Door heights 650 - 729mm
(Max. Door Width 1800mm) 40VA up to 7.2kg 41VA over 7.2kg



Model	A	B	C	Q	Y
40VA	~115-102°	160-228	335-226	355-428	144-74
41VA					



basics range



PTP900 - Single Bowl Sink 900mm



PTP1000 - Bowl and a Half Sink 1000mm



Orinoco - Twin Lever Chrome Tap



Obion - Single Lever Satin Tap



Pull Out - 600mm Extendable Extractor



Canopy - Canopy Style Extractor



Canopy UT07-52C ECO - Canopy Style Extractor



Fabita 600SS - Stainless Steel Extractor



Fabita 900SS - Stainless Steel Extractor



Fabita 600SSCG - Stainless Steel & Curved Glass Extractor



Fabita 900SSCG - Stainless Steel & Curved Glass Extractor



my.

my. kitchen



My 23 Ltd
Showroom (by appointment only)
Unit 24
Sandtoft Gateway
Sandtoft
Doncaster
United Kingdom
DN9 1FA

createmykitchen.co.uk